

Technical Data Sheet

MOY 100mm Liquid Drip Trim

Product Description / Use:

MOY Liquid Drip Trims are made from pultruded glass reinforced polyester (GRP), designed to provide a weatherproof roof edge finish and create a waterproof bond when used with MOY Liquid applied waterproofing systems.

The low coefficient of thermal expansion solves the age-old problem of roof leakage caused by the splitting of roofing membranes at roof edges. Despite its lightweight nature, GRP trims are strong and durable with a strength-to-weight ratio superior to aluminium and steel.

MOY Liquid Drip Trims are available in black as standard*, they resist corrosion and the extremes of atmospheric pollution and require the minimum of maintenance.

*Other colours may be available, contact MOY Materials for details.

System Fire Testing:

Liquid Drip Trims are used purely as detail items within MOY Liquid applied waterproofing systems.

The complete roof build-up should be tested to CEN/TS 1187:2012 and classified accordingly in accordance with BS EN 13501-5 (B_{ROOF} t1, t2, t3, t4) for the relevant country and the local building regulations, standards and codes of practice.

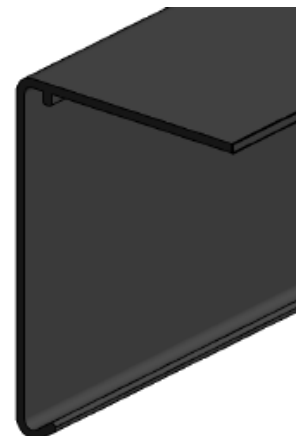
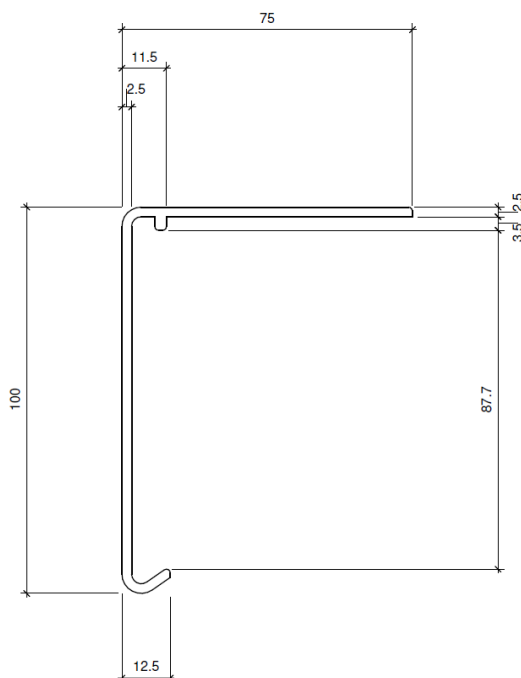
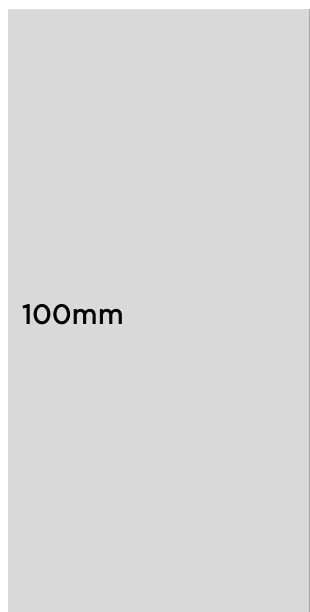
Application:

Trims should be fixed by means of cadmium or galvanised nails or screws at not more than 300mm centres with the ends of each length firmly secured. A minimum of 8 fixings per length is required.

Light sanding and priming of the legs are recommended to ensure good adhesion.



Product Range:





Technical Data Sheet

MOY 100mm Liquid Drip Trim

Delivery form:

All sections are supplied in 2.5m lengths together with loose jointing sleeves.

90° internal and external corner pieces are available.

- Packs of 10 for 100mm deep trims
- Individual lengths also, subject to availability – check with MOY Materials.

Storage:

To be stored in original packaging, in a horizontal position and under cool and dry conditions. They must be protected from direct sunlight, rain, snow and ice.