

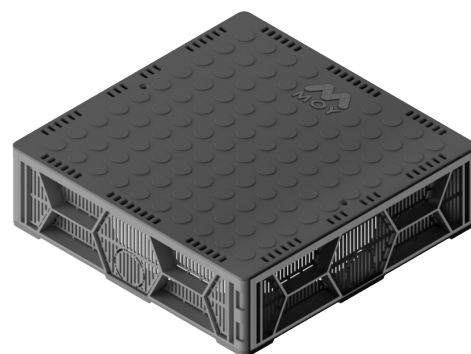
Technical Data Sheet MOY_Inspection Chamber

Product Description / Use:

MOY Inspection Chamber is a modularly extendable, UV resistant plastic inspection box, with drainage openings and predetermined breaking lines.

Key Features:

- External waterproofing contact area – application in corner and parapet wall areas.
- On-site drill opening on the cover – downpipe outlet.
- Drainage openings and predetermined breaking lines – connection to drainage channels and drainage pipes.
- Modular system – extendable in 1-5-10 cm steps. From 20 cm total product height base plate must be used as intermediate stiffening element between the extension levels.
- Material made of durable and UV stable recycled polymers. After working life span can be recycled again.
- Economical and sparing to natural resources – dismantled delivery, economical transport.
- Wind drift proof – cover safely secured by stainless steel screws.
- Terrace usage – galvanised metal grid for terrace outlets.



Technical Specification:

Technical Data	
Component	Description
MIC-B	MOY chamber baseplate 400 x 400 mm
MIC-W50	MOY chamber wall 50 mm
MIC-W100	MOY chamber wall 100 mm
MIC-C	MOY chamber cover 400 x 400 mm
MIC-G	MOY chamber grid 400 x 400 mm

Application:

Inspection chamber for green, gravel roofs and for paved surfaces. Compatible for syphonic and for gravity drainage systems. Modularly extendable in 1-5-10 cm steps.

Delivery form:

Box

Storage:

Stored in the original package, UV resistant.

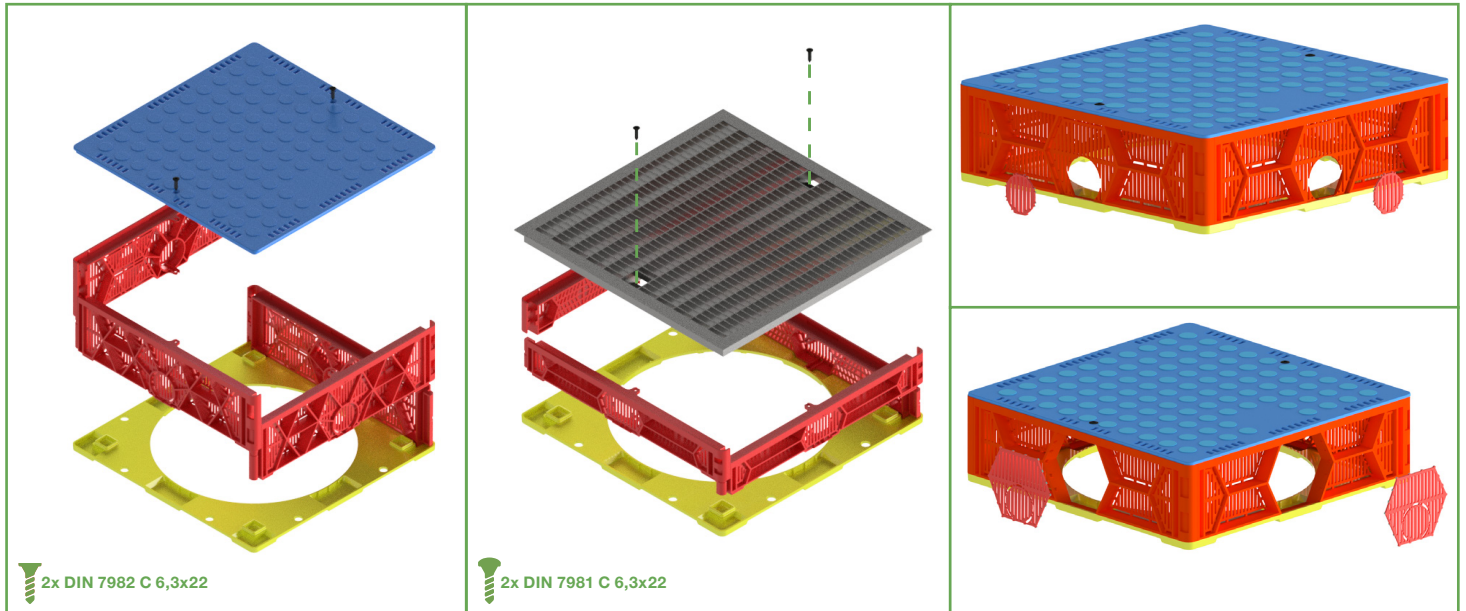


GREEN ROOF



Technical Data Sheet MOY_Inspection Chamber

Usage:



Reinforcement:

