

## Technical Data Sheet JUAL Roof Outlets

### Product Description / Use:

JUAL rainwater outlets are designed for vertical drainage of flat roofs with either reinforced bitumen or single ply waterproofing membrane. Manufactured from stainless steel they are available with or without membrane flanges and in a variety of pipe diameters and spigot lengths, to accommodate a range of standard drainage pipework.

### Materials:

Fully welded pipe and assembly ring in acid proof stainless steel AISI 316 / EN 1.4401.

Flange in stainless steel AISI 304 / EN 1.4301 for bitumen membrane or foil coated steel flange for foil/single ply membrane.

Membranes in SBS or APP bitumen as well as various foil types are integrated from the factory.



### Certification:



**TÜVRheinland®**  
Precisely Right.

The roof outlet is approved and certified according to EN 1253 and EN 1124, which specifies requirements for construction and function, and manufactured in accordance with DIN 18200, which specifies requirements for serial production.

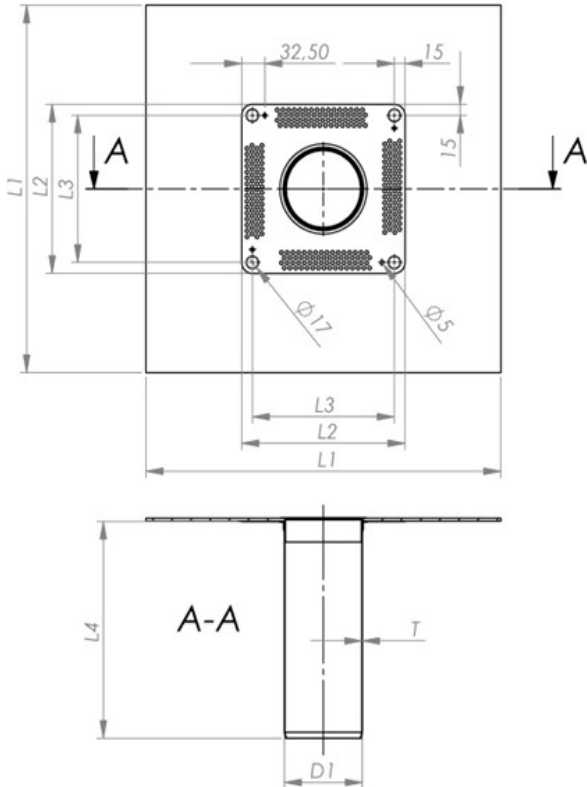
### Application:

Installation and application must be conducted in accordance with MOY installation guidelines, current industry standards and compatibility with the roof's membrane must be ensured.



## Technical Data Sheet JUAL Roof Outlets

### Technical Specification:



D1	L1		L2		L3		L4	T
	Bitumen	Foil	Bitumen /Foil	Steel flange	Bitumen /Foil	Steel flange		
Ø 50	500	330 – 400*	230	300	200	270	250	1 ± 0,2
Ø 63				330		300	270	
Ø 75								
Ø 80								
Ø 90			300	360	270	330	400	
Ø 95								
Ø 110			300	360	270	330	600	
Ø 125								
Ø 145								
Ø 160								

\*Depends on foil type

Standard pipe lengths are 250, 400 and 600mm. In case other lengths are required, extension pipes are recommended. See separate data sheet. As an alternative, pipes can be supplied in adapted lengths.

EXT. DIA.	APPLICATION (OUTLET DIA)
Ø 50	Ø 50 socket / Ø 63 insertion*
Ø 63	Ø 75 insertion*
Ø 75	Ø 75 socket / Ø 90 insertion*
Ø 90	Ø 90 socket / Ø 110 insertion*
Ø 110	Ø 110 socket / Ø 125 insertion*
Ø 125	Ø 125 socket / Ø 145 insertion*
Ø 145	Ø 160 insertion*
Ø 160	Ø 160 socket

\*Insertion into standard pipes without socket. O-ring in EPDM rubber is included for each outlet and pipe ends are bevelled for easy installation.

## Technical Data Sheet JUAL Roof Outlets

### Product Selection:

#### JUAL Stainless Steel Single Ply Membrane Rainwater Outlets

Product Code	Description	Flow Rate @ 35mm head of water (l/s)			
		No leaf grate	Monsoon leaf grate	Universal leaf grate	Wireball leaf grate
24-72050-300-*	50mm/300mm JUAL S/Steel outlet c/w Single ply	3,5	4,4	4,0	2,0
24-72062-300-*	63mm/300mm JUAL S/Steel outlet c/w Single ply	-	8,8	3,0	3,2
24-72075-300-*	75mm/300mm JUAL S/Steel outlet c/w Single ply	4,1	10,0	4,0	4,0
24-72090-300-*	90mm/300mm JUAL S/Steel outlet c/w Single ply	5,0	8,5	4,0	4,0
24-72110-300-*	110mm/300mm JUAL S/Steel outlet c/w Single ply	5,8	7,5	4,0	5,7
24-72125-300-*	125mm/300mm JUAL S/Steel outlet c/w Single ply	9,4	12,0	8,7	8,0
24-72145-300-*	145mm/300mm JUAL S/Steel outlet c/w Single ply	10,8	13,5	10,7	9,3
24-72160-300-*	160mm/300mm JUAL S/Steel outlet c/w Single ply	11,0	13,4	9,5	9,6

\* specify Single Ply PVC membrane type



## Technical Data Sheet JUAL Roof Outlets

### JUAL Stainless Steel Rainwater Outlets c/w Bitumen Primer Flange

Product Code	Description	Flow Rate @ 35mm head of water (l/s)			
		No leaf grate	Monsoon leaf grate	Universal leaf grate	Wireball leaf grate
24-69050-300-Asphalt	50mm/300mm JUAL S/Steel outlet c/w Primer	3,5	4,4	4,0	2,0
24-69062-300-Asphalt	63mm/300mm JUAL S/Steel outlet c/w Primer	-	8,8	3,0	3,2
24-69075-300-Asphalt	75mm/300mm JUAL S/Steel outlet c/w Primer	4,1	10,0	4,0	4,0
24-69090-300-Asphalt	90mm/300mm JUAL S/Steel outlet c/w Primer	5,0	8,5	4,0	4,0
24-69110-300-Asphalt	110mm/300mm JUAL S/Steel outlet c/w Primer	5,8	7,5	4,0	5,7
24-69125-300-Asphalt	125mm/300mm JUAL S/Steel outlet c/w Primer	9,4	12,0	8,7	8,0
24-69145-300-Asphalt	145mm/300mm JUAL S/Steel outlet c/w Primer	10,8	13,5	10,7	9,3
24-69160-300-Asphalt	160mm/300mm JUAL S/Steel outlet c/w Primer	11,0	13,4	9,5	9,6



## Technical Data Sheet JUAL Roof Outlets

### JUAL Stainless Steel Bitumen Membrane Rainwater Outlets

Product Code	Description	Flow Rate @ 35mm head of water (l/s)			
		No leaf grate	Monsoon leaf grate	Universal leaf grate	Wireball leaf grate
24-71050-400-1SBS	50mm/400mm JUAL Bitumen outlet c/w SBS	3,5	4,4	4,0	2,0
24-71062-400-1SBS	63mm/400mm JUAL Bitumen outlet c/w SBS	-	8,8	3,0	3,2
24-71075-400-1SBS	75mm/400mm JUAL Bitumen outlet c/w SBS	4,1	10,0	4,0	4,0
24-71090-400-1SBS	90mm/400mm JUAL Bitumen outlet c/w SBS	5,0	8,5	4,0	4,0
24-71110-400-1SBS	110mm/400mm JUAL Bitumen outlet c/w SBS	5,8	7,5	4,0	5,7
24-71125-400-1SBS	125mm/400mm JUAL Bitumen outlet c/w SBS	9,4	12,0	8,7	8,0
24-71145-400-1SBS	145mm/400mm JUAL Bitumen outlet c/w SBS	10,8	13,5	10,7	9,3
24-71160-400-1SBS	160mm/400mm JUAL Bitumen outlet c/w SBS	11,0	13,4	9,5	9,6



MOY Materials Ltd has taken care to ensure that the information provided in the literature is correct and up to date. However, it is not intended to form any part of a contract or provide a guarantee. Purchasers/intending purchasers should contact MOY Technical to check whether there have been any changes to the information since publication of the literature. Please ensure you have read the hazard labels and material safety data sheet before using this product.