

Technical Data Sheet ParaDrain Outlets

Product Description / Use:

ParaDrain outlets are designed for horizontal drainage via through-wall applications or parapets, on flat roofs with either MOY reinforced bitumen waterproofing, or single ply membrane.

Materials:

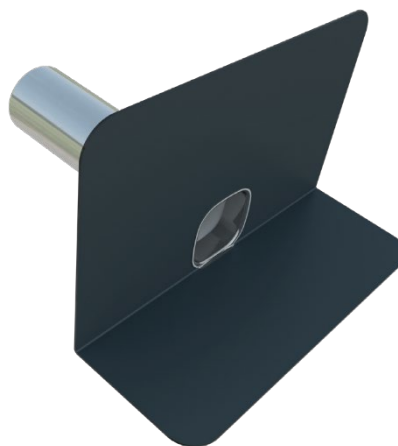
Spigot: High quality stainless steel

Flange: To match waterproofing membrane, either SBS bitumen membrane or PVC* single ply membrane.

** Other non-standard flanges may be available on request (e.g. TPO)*

Benefits:

- High quality 400mm or 600mm long spigot manufactured from stainless steel
- Circular or rectangular spigots
- Factory bonded flange to match specific membrane material being used (material must be specified at time of order)
- Membrane attached to the outlet allows for easy installation
- Suitable for use in both new build or refurbishment applications
- Circular or rectangular spigot options
- High performance wide outlets for increased flow rates



Certification:



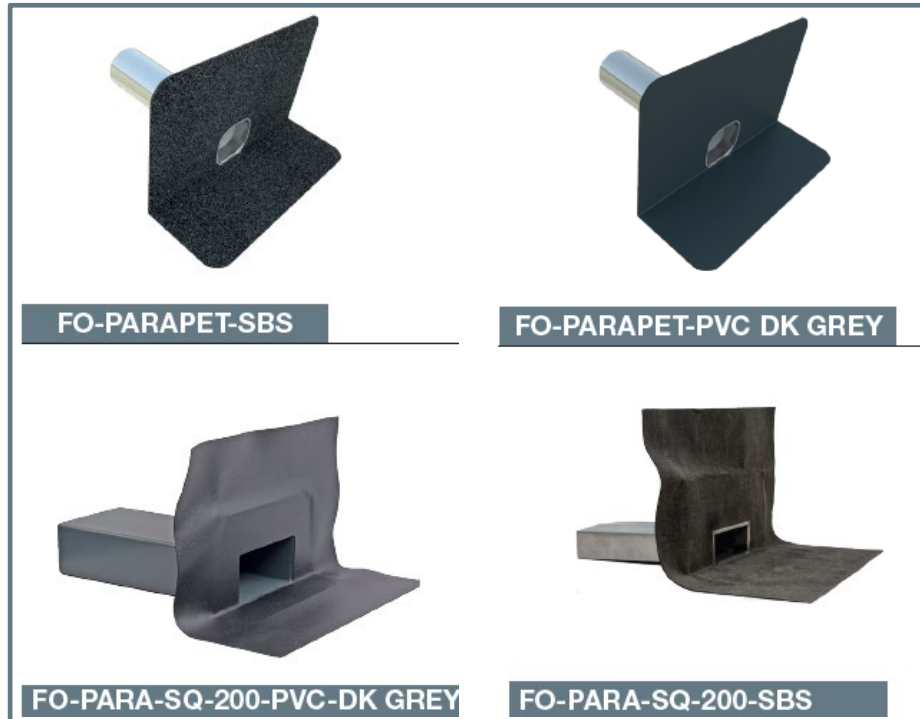
Application:

Installation and application must be conducted in accordance with MOY installation guidelines, current industry standards and compatibility with the roof membrane must be ensured.



Technical Data Sheet ParaDrain Outlets

Product Selection:



Outlet flow rates with leafguards are based on a water depth of 35mm above the invert level of the outlet as recommended by UK design standard BS EN 12056-3:2000. If required, greater flow rates can be achieved if the outlets are sumped - please request a rainwater calculation by MOY Technical Services.

400mm Spigot:

Product Code	Flow Rate l/sec	Outlet drain (mm)	Aperture size (mm)	Membrane Attachment	
				Type	Size (mm)
Circular - SBS Flange					
FO-PARAPET-50-SBS	0.32	50		Bituminous	500 x 500
FO-PARAPET-75-SBS	0.63	75		Bituminous	500 x 500
FO-PARAPET-110-SBS	1.06	110		Bituminous	500 x 500
Circular - PVC Flange (Dark Grey)					
FO-PARAPET-50-PVC DK GREY	0.32	50		Dark grey PVC	350 x 350
FO-PARAPET-75-PVC DK GREY	0.63	75		Dark grey PVC	350 x 350
FO-PARAPET-110-PVC DK GREY	1.06	110		Dark grey PVC	350 x 350
Square - PVC Flange (Dark Grey)					
FO-PARAPET-SQ-200 PVC DK GY	1.85	n/a	205 x 103	Dark grey PVC	500 x 600
Square - SBS Flange					
FO-PARAPET-SQ-200 SBS	2.02	n/a	225 x 75	Bituminous	500 x 600

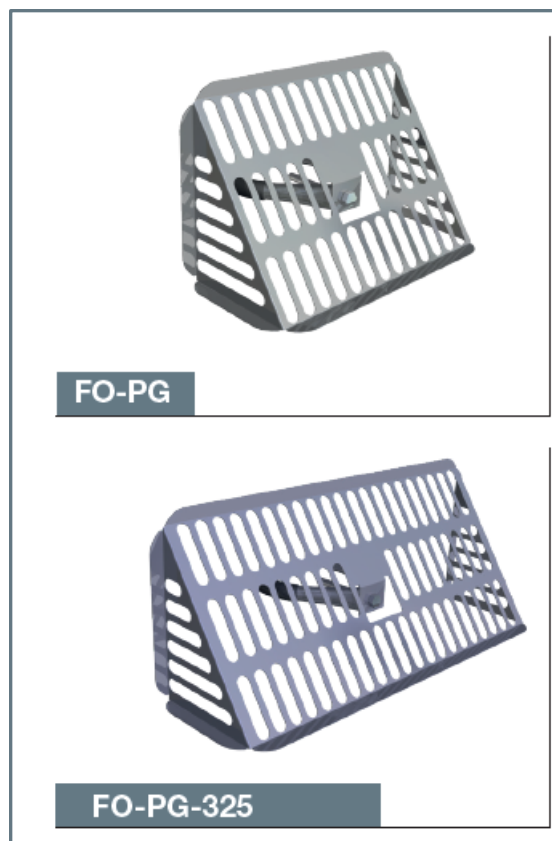
Technical Data Sheet ParaDrain Outlets

600mm Spigot:

Product Code	Flow Rate l/sec	Outlet drain (mm)	To suit pipe size (mm)	Membrane Attachment	
				Type	Size (mm)
Circular - SBS Flange					
FO-PARAPET-50/600-SBS	0.32	50	50	Bituminous	500 x 500
FO-PARAPET-75/600-SBS	0.63	75	75	Bituminous	500 x 500
FO-PARAPET-110/600-SBS	1.06	110	110	Bituminous	500 x 500
Circular - PVC Flange (Dark Grey)					
FO-PARAPET-50/600-PVC DK GREY	0.32	50	50	Dark grey PVC	350 x 350
FO-PARAPET-75/600-PVC DK GREY	0.63	75	75	Dark grey PVC	350 x 350
FO-PARAPET-110/600-PVC DK GREY	1.06	110	110	Dark grey PVC	350 x 350

Leafguards for ParaDrain:

Leafguard for ParaDrain	Description
FO-PG	Stainless steel parapet leafguard prevents blocking of outlet by debris. Securely clamps to inside of outlet stem, can only be removed with the correct tool. Suits all sizes of ParaDrain outlets.
FO-PG-325	Extra-large leafguard for FO-PARA-SQ-200.



MOY Materials Ltd has taken care to ensure that the information provided in the literature is correct and up to date. However, it is not intended to form any part of a contract or provide a guarantee. Purchasers/intending purchasers should contact MOY Technical to check whether there have been any changes to the information since publication of the literature. Please ensure you have read the hazard labels and material safety data sheet before using this product.