

Technical Data Sheet MOY R48 Sleeve

Product Description / Use:

The R48 is a thermally broken high-quality polypropylene (PP) sleeve with 3 barbs for securement of the waterproofing membrane in seam fastening applications.

To be used in conjunction with the appropriate carbon or stainless-steel screw fasteners into a range of deck types.

Description:

- High performance sleeve with 3 barbs provides high design values
- FM Approval
- Sleeve tip enables pre-assembling with different fasteners
- Universal sleeve for use with compatible *isotak*® fasteners

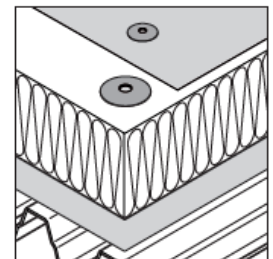
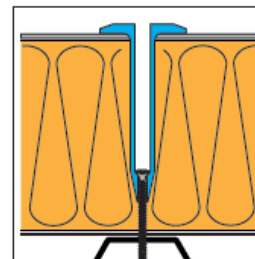
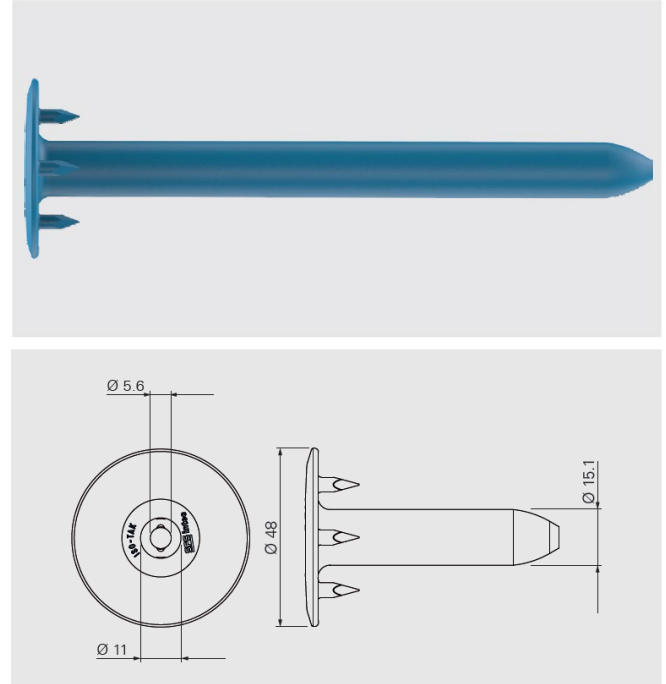
Certification:



Sleeve Product Range:

Code	L _{mm}	Pack Quantity	Article Code
R48×65	65	500	527614
R48×85	85	500	527634
R48×105	105	500	527635
R48×135	135	500	527636
R48×165	165	500	527637
R48×185	185	500	527638
R48×225	225	250	527639
R48×255	255	250	1277760
R48×285	285	250	1274841
R48×325	325	250	1277758
R48×365	365	250	1277771
R48×405	405	250	1277772
R48×485	485	250	1278130
R48×565	565	250	1278132
R48×645	645	200	1278137
R48×705	705	200	1278153

Packaging type: cardboard box










Overlap length between sleeve and fastener: 13mm



Technical Data Sheet MOY R48 Sleeve

Fasteners to combine with:

Product Code	Description	
BS-4,8	Carbon steel fastener for steel deck and timber and timber-based boards.	
BS-S-4,8	Stainless steel fastener for steel deck and timber and timber-based boards.	
BS-6,1	Carbon steel fastener for steel deck and timber and timber-based boards.	
TI-T25-6,3	Carbon steel fastener for concrete deck.	
TIA-T25-6,3	Adjustable carbon steel fastener for tapered insulation on concrete deck.	
TI-S-Z10-6,3	Stainless steel fastener for concrete deck.	
TS-T25-6,0	Carbon steel fastener for timber and timber-based boards and concrete deck.	

Installation:

In order to ensure the correct application of the tube & fastener combination into the substrate and to avoid overdriving and/or damage, all sleeves and fasteners must be installed using only the recommended tooling, including screw guns (with torque setting), drive bars and correct bits etc.

Minimum 25mm embedment into the concrete is required. The minimum penetration for steel and timber decks is 20mm and 30mm respectively (including the deck thickness).

Site pull-out tests required to confirm performance into any existing substrate on refurbishment projects and for both new and existing concrete decks.