

Technical Data Sheet MOY R50 Sleeve

Product Description / Use:

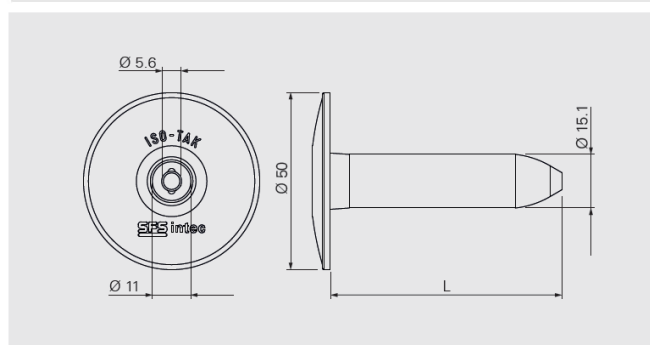
The R50 is a thermally broken high-quality polypropylene (PP) sleeve for securement of the waterproofing membrane in seam fastening applications.

To be used in conjunction with the appropriate carbon or stainless-steel screw fasteners into a range of deck types.

Description:

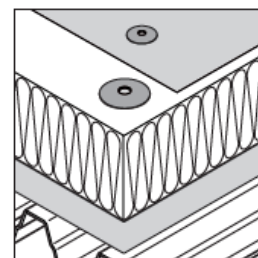
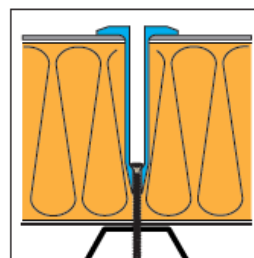
- 50 mm head diameter provides high design values
- Sleeve tip enables pre-assembling with different fasteners
- Universal sleeve suitable for compatible *isotak*® fasteners

Certification:



Sleeve Product Range:

Code	L _{mm}	Pack Quantity	Article Code
R50×15	15	1000	527207
R50×35	35	500	527216
R50×65	65	500	527218
R50×85	85	500	527600
R50×105	105	500	527601
R50×135	135	500	527604
R50×165	165	500	527605
R50×185	185	500	527606
R50×225	225	250	527608
R50×255	255	250	527610
R50×285	285	250	527612
R50×325	325	250	1107902
R50×365	365	250	1107903
R50×405	405	250	1107904
R50×485	485	250	1278134
R50×565	565	200	1278136
R50×645	645	200	1278151
R50×705	705	200	1278154










Overlap length between sleeve and fastener: 13mm

Packaging type: cardboard box



Technical Data Sheet MOY R50 Sleeve

Fasteners to combine with:

Product Code	Description	
BS-4,8	Carbon steel fastener for steel deck and timber and timber-based boards.	
BS-S-4,8	Stainless steel fastener for steel deck and timber and timber-based boards.	
BS-6,1	Carbon steel fastener for steel deck and timber and timber-based boards.	
TI-T25-6,3	Carbon steel fastener for concrete deck.	
TIA-T25-6,3	Adjustable carbon steel fastener for tapered insulation on concrete deck.	
TI-S-Z10-6,3	Stainless steel fastener for concrete deck.	
TS-T25-6,0	Carbon steel fastener for timber and timber-based boards and concrete deck.	

Installation:

In order to ensure the correct application of the tube & fastener combination into the substrate and to avoid overdriving and/or damage, all sleeves and fasteners must be installed using only the recommended tooling, including screw guns (with torque setting), drive bars and correct bits etc.

Minimum 25mm embedment into the concrete is required. The minimum penetration for steel and timber decks is 20mm and 30mm respectively (including the deck thickness).

Site pull-out tests required to confirm performance into any existing substrate on refurbishment projects and for both new and existing concrete decks.