

Technical Data Sheet MOY TI-S-Z10-6,3 Fastener

Product Use:

6,3mm diameter austenitic stainless steel fastener for waterproof membrane and insulation securement on concrete decks*.

To be used in conjunction with the appropriate stress plates or thermally broken sleeves.

For use where the internal relative humidity is in excess of 65% or for chemically aggressive atmospheres or conditions. For example, coastal conditions.

Ideal for use in refurbishment applications where the detailed condition of the existing roof is not known or when the build-up contains abrasive layers that may damage the corrosion protection of carbon steel fasteners and make them ineffective.

For applications where an extended design life and warranty is required.

Description:

Austenitic stainless steel, grade A2, AISI. European standard 1.4301, Grade A2. SQ3 drive (see note re change to head form).

Features and Benefits:

- Stainless steel quality A4, 1.4301, AISI 304
- Fast and easy installation
- Plug free installation
- Only 20 mm setting depth required
- Environmentally friendly, free of Chromium VI

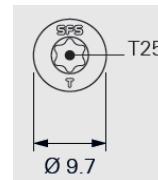
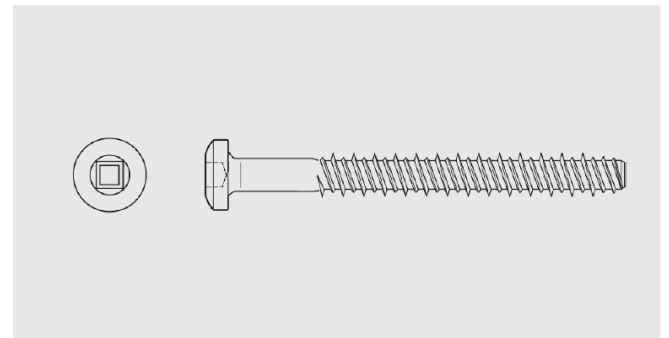
Certification:



Fastener Product Range:

Code	L _{mm}	TL _{mm}	Pack Quantity	Article Code
TI-S-Z10-6,3x45	45	42	100	507331
TI-S-Z10-6,3x75	75	50	100	501569
TI-S-Z10-6,3x115	115	50	100	974637

Packaging type: cardboard box

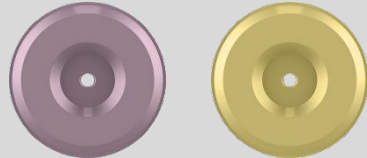






Gradual conversion to TI-S-T25-6,3 with Torx 25 drive during 2023, as stocks of TI-S-Z10-6,3 (SQ3 drive) are depleted.



Technical Data Sheet MOY TI-S-Z10-6,3 Fastener

Products to combine with:

Product Code	Description	
FI-P-6,8	Stress plates for PVC and TPO based waterproof membranes. For isoweld® field fastening application.	
R48	Sleeve with 3 peaks for waterproof membrane securement. For seam fastening application.	
R50	Sleeve for waterproof membrane securement. For seam fastening application.	
R75	Sleeve for insulation securement.	
FI-R-20	Sleeve for waterproof membrane and insulation securement. For isoweld® field fastening and seam fastening applications. For use with compatible steel termination bars.	

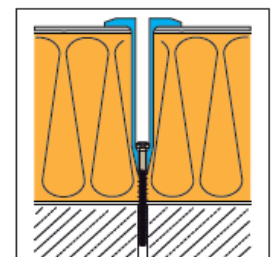
Installation:

In order to ensure the correct application of the tube & fastener combination into the substrate and to avoid overdriving and/or damage, all sleeves and fasteners must be installed using only the recommended tooling, including screw guns (with torque setting), drive bars and correct bits etc.

It is recommended that pull-out testing is undertaken by SFS for all new build and refurbishment projects. This will ensure the suitability of the fastener and additionally will determine the optimum drill diameter and embedment required. Fixing should be directly into the concrete substrate and not into any screed layers.

*Application into concrete:

Substrate material quality:	min. C12/15
Substrate material thickness:	min. 40 mm
Pre-drill diameter:	5.0 mm (subject to pull-out tests). additional diameter drill bits available.
Setting depth:	min. 20 mm into concrete, not screed.
Depth of pilot hole:	min. 15 mm deeper than setting depth.



MOY Materials Ltd has taken care to ensure that the information provided in the literature is correct and up to date. However, it is not intended to form any part of a contract or provide a guarantee. Purchasers/intending purchasers should contact MOY Technical to check whether there have been any changes to the information since publication of the literature. Please ensure you have read the hazard labels and material safety data sheet before using this product.