

Technical Data Sheet MOY TI-T25-6,3 Fastener

Product Use:

6,3mm diameter carbon steel fastener for waterproof membrane and insulation securement on concrete decks*.

To be used in conjunction with the appropriate stress plates or thermally broken sleeves.

Description:

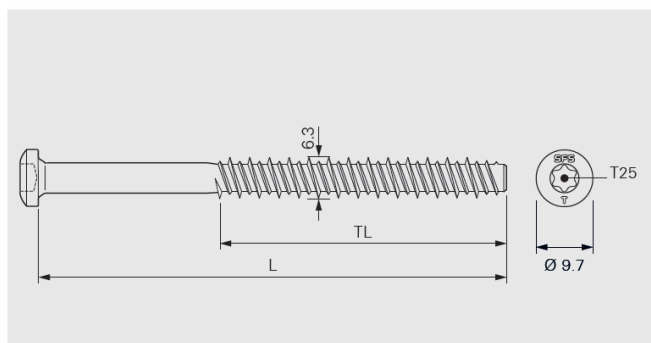
Case hardened carbon steel. Durocoat® corrosion protection. Resistance 15 cycles Kesternich test according to:

- EAD 030351-00-0402, A2.4
- FM Approval Standard 4470

Features and Benefits:

- Fast and easy installation, pre-drill and screw
- Plug free installation
- Only 20 mm setting depth required
- Removable
- High quality corrosion protection, environmentally friendly, free of Chromium VI

Certification:



Fastener Product Range:

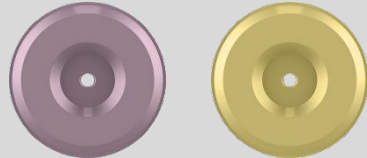




Code	L _{mm}	TL _{mm}	Pack Quantity	Article Code
TI-T25-6,3×30	30	27	500	1237863
TI-T25-6,3×50	50	47	500	1237865
TI-T25-6,3×60	60	50	250	1237869
TI-T25-6,3×70	70	50	250	1237870
TI-T25-6,3×80	80	50	250	1237871
TI-T25-6,3×90	90	50	250	1237872
TI-T25-6,3×100	100	50	250	1237873
TI-T25-6,3×120	120	50	250	1237874
TI-T25-6,3×140	140	50	250	1237875
TI-T25-6,3×160	160	50	250	1237876

Packaging type: plastic bucket



Technical Data Sheet MOY TI-T25-6,3 Fastener

Products to combine with:

Product Code	Description	
FI-P-6,8	Stress plates for PVC and TPO based waterproof membranes. For isoweld® field fastening application.	
R48	Sleeve with 3 peaks for waterproof membrane securement. For seam fastening application.	
R50	Sleeve for waterproof membrane securement. For seam fastening application.	
R75	Sleeve for insulation securement.	
FI-R-20	Sleeve for waterproof membrane and insulation securement. For isoweld® field fastening and seam fastening applications. For use with compatible steel termination bars.	

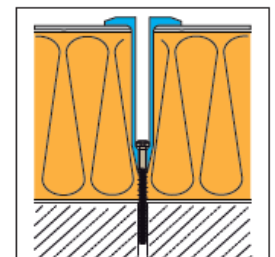
Installation:

In order to ensure the correct application of the tube & fastener combination into the substrate and to avoid overdriving and/or damage, all sleeves and fasteners must be installed using only the recommended tooling, including screw guns (with torque setting), drive bars and correct bits etc.

It is recommended that pull-out testing is undertaken by SFS for all new build and refurbishment projects. This will ensure the suitability of the fastener and additionally will determine the optimum drill diameter and embedment required. Fixing should be directly into the concrete substrate and not into any screed layers.

*Application into concrete:

Substrate material quality:	min. C12/15
Substrate material thickness:	min. 40 mm
Pre-drill diameter:	5.0 mm (subject to pull-out tests). additional diameter drill bits available.
Setting depth:	min. 25 mm into concrete, not screed.
Depth of pilot hole:	min. 15 mm deeper than setting depth.



MOY Materials Ltd has taken care to ensure that the information provided in the literature is correct and up to date. However, it is not intended to form any part of a contract or provide a guarantee. Purchasers/intending purchasers should contact MOY Technical to check whether there have been any changes to the information since publication of the literature. Please ensure you have read the hazard labels and material safety data sheet before using this product.