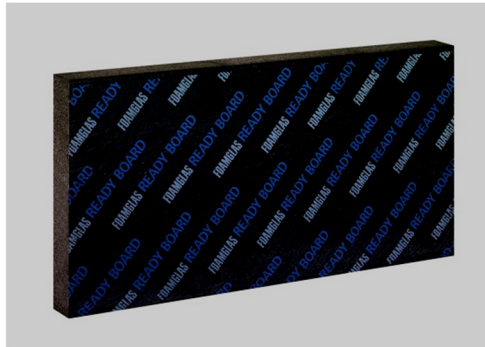




# FOAMGLAS® READY BOARD T3+

Page: 1      Date: 01.01.2022      Supersedes: 12.03.2018      www.foamglas.com



FOAMGLAS® READY BOARD T3+ consists of FOAMGLAS® T3+ slabs bonded together. The upper surface is coated with a bitumen layer and covered with a PE foil. This allows direct torch-on of waterproofing sheets. The lower side is lined with a white glass fleece facing.

### Form of delivery (content per package)

length x width [mm]	1200 x 600							
thickness [mm]	50	60	70	80	90	100	110	120
R <sub>D</sub> [m²K/W]	1.35	1.65	1.90	2.20	2.50	2.75	3.05	3.30
units	5	4	4	3	3	3	2	2
square metre [m²]	3.60	2.88	2.88	2.16	2.16	2.16	1.44	1.44

length x width [mm]	1200 x 600							
thickness [mm]	130	140	150	160	170	180	190	200
R <sub>D</sub> [m²K/W]	3.60	3.85	4.15	4.40	4.7	5.0	5.25	5.55
units	2	2	2	2	14*	14*	12*	12*
square metre [m²]	1.44	1.44	1.44	1.44	10.08	10.08	8.64	8.64

Other dimensions and thicknesses are available on request.

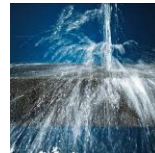
\* No single package, but all boards on a pallet.

## General FOAMGLAS® Cellular Glass Insulation characteristics

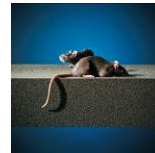
Description	: FOAMGLAS® Insulation is manufactured from specially graded recycled glass and natural raw materials which are available in abundant supply (sand, dolomite, lime...). The insulation is totally inorganic, contains no ozone depleting propellants, flame resistant additives or binders. Without VOC or other volatile substances.
Reaction to fire (EN 13501-1)	: Core material complying with Euroclass A1, non-combustible, no toxic fumes
Service temperature limits	: from -265°C to +430°C
Water vapour resistance (EN ISO 10456)	: $\mu = \infty$
Hygroscopicity	: zero
Capillarity	: zero
Melting point (cf DIN 4102-17)	: >1000 °C
Thermal expansion coefficient (EN 13471)	: $9 \times 10^{-6} \text{ K}^{-1}$
Specific heat (EN ISO 10456)	: 1000 J/(kg·K)
FOAMGLAS® characteristics	:



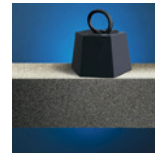
Time-tested thermal performance



Waterproof



Resistant to attack



High compressive strength



Acid resistant / chemical resistant



Non-combustible



Impervious to water vapour



Dimensionally stable



Ecological



Radon protection



# FOAMGLAS® READY BOARD T3+

Page: 2      Date: 01.01.2022      Supersedes: 12.03.2018      www.foamglas.com

## 1. Product characteristics according to EN 13167 <sup>1)</sup>

Density (± 15%) (EN 1602)	: 100 kg/m <sup>3</sup>
Thickness (EN 823) ± 2 mm	: from 50 to 200 mm
Length (EN 822) ± 5 mm	: 1200 mm
Width (EN 822) ± 2 mm	: 600 mm
Thermal conductivity (EN ISO 10456)	: $\lambda_D \leq 0.036 \text{ W/(m}\cdot\text{K)}$
Reaction to fire (EN 13501-1)	: Euroclass E (Core material Euroclass A1)
Point load (EN 12430)	: PL $\leq 1.5 \text{ mm}$
Compressive strength (EN 826 annexe A)	: CS $\geq 500 \text{ kPa}$
Bending strength (EN 12089)	: BS $\geq 450 \text{ kPa}$
Tensile strength (EN 1607)	: TR $\geq 150 \text{ kPa}$
Compressive creep (EN 1606)	: CC (1.5/1/50) 225

<sup>1)</sup> CE-marking ensures conformity with the mandatory essential requirements of CPD as mentioned in EN 13167; within the CEN Keymark certification all mentioned characteristics are certified by an empowered, notified and accredited 3<sup>rd</sup> party.

## 2. Additional product characteristics

Environmental Product Declaration : EPD-PCE-20150042-IBA1-DE  
(ISO 14025 and EN 15804)

## 3. Applications

Insulation system allowing for torch-on roofing:

- flat roofs: cold bonding on steel deck
- belowgrade: walls
- Interior insulation: floors