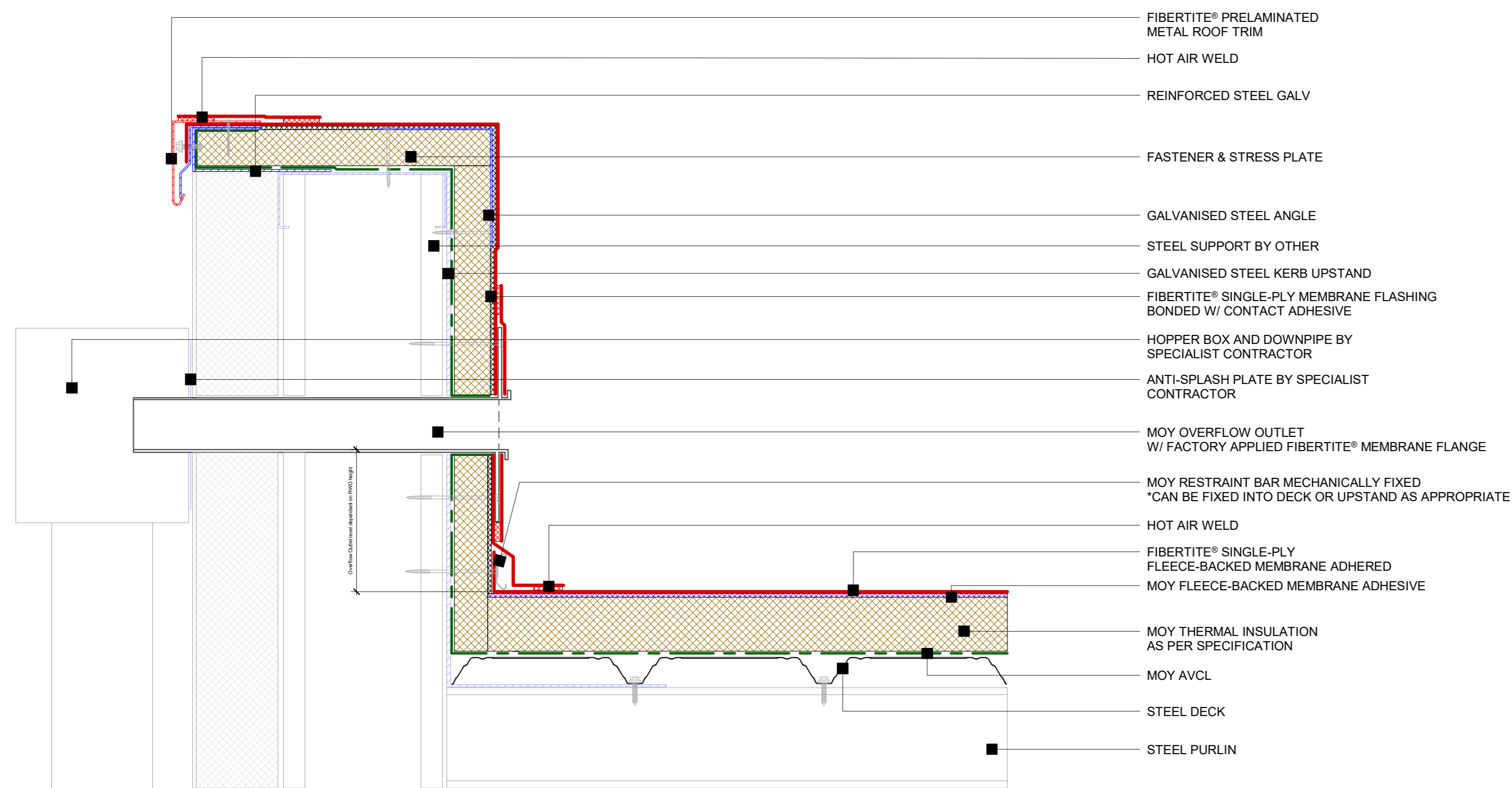
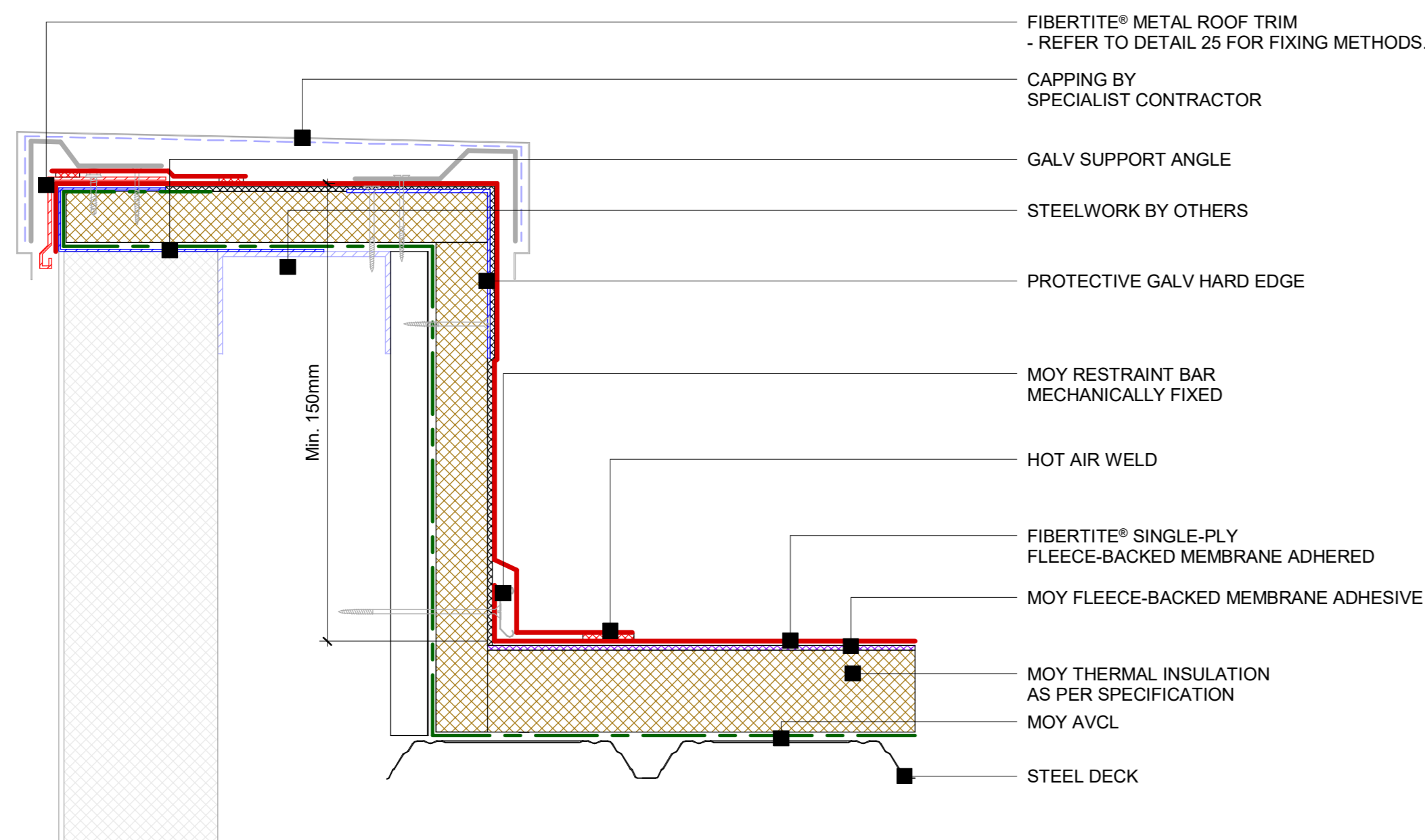


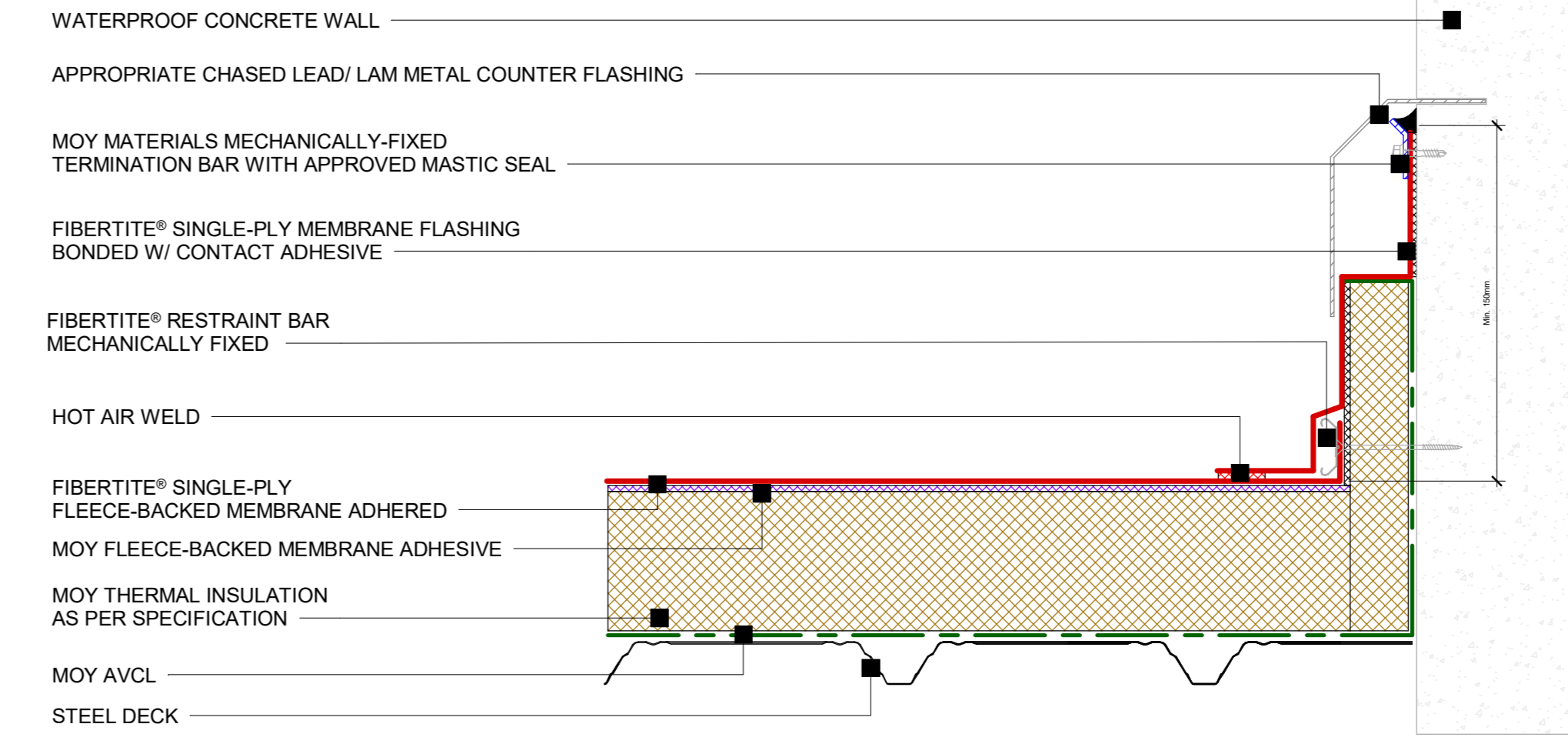
7 **FiberTite® - Parapet outlet detail**  
1 : 5



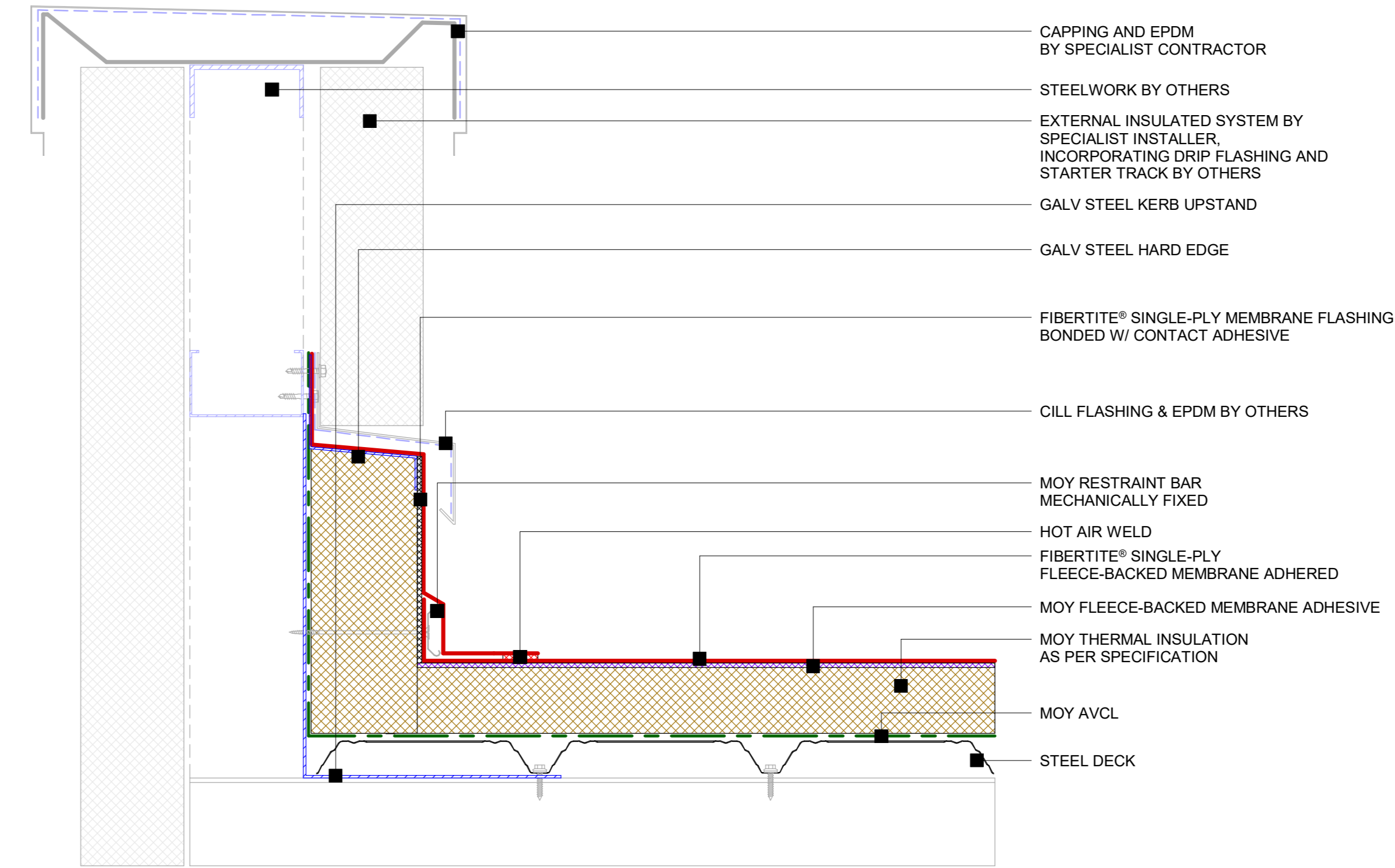
8 **FiberTite® - Overflow outlet detail**  
1 : 5



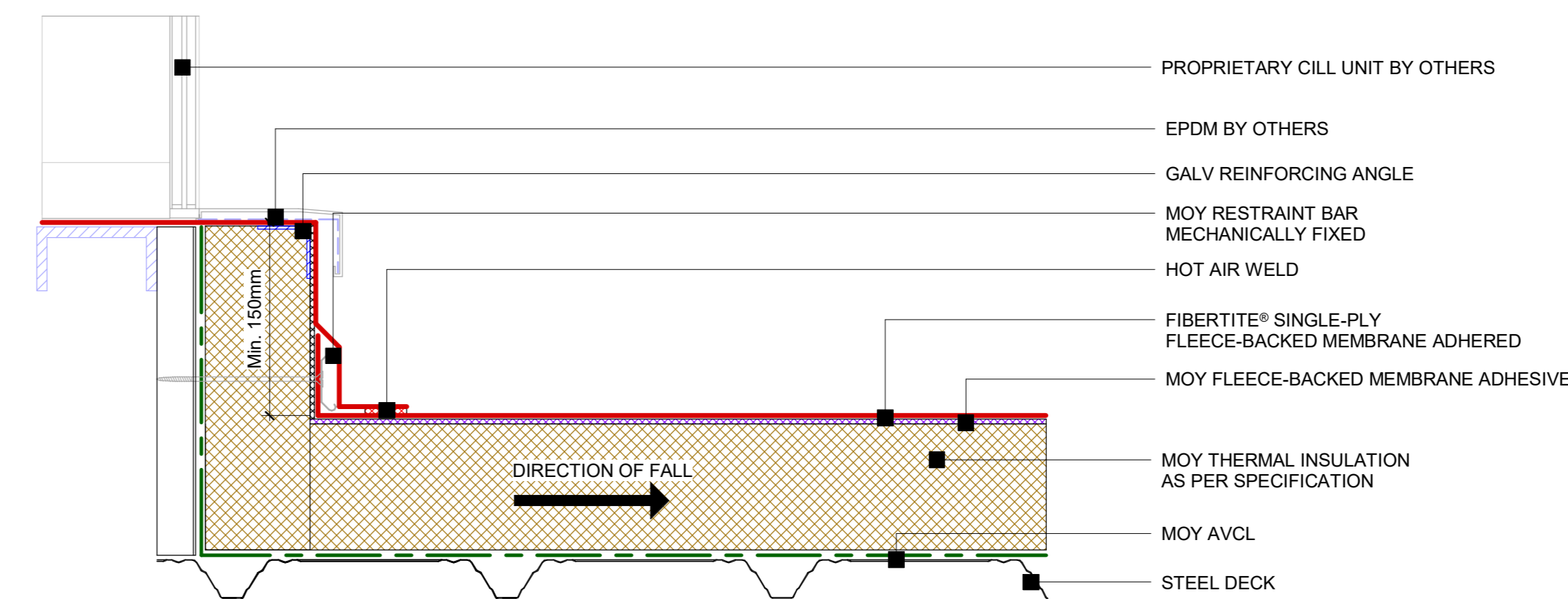
9 **FiberTite® - Upstand detail**  
1 : 5



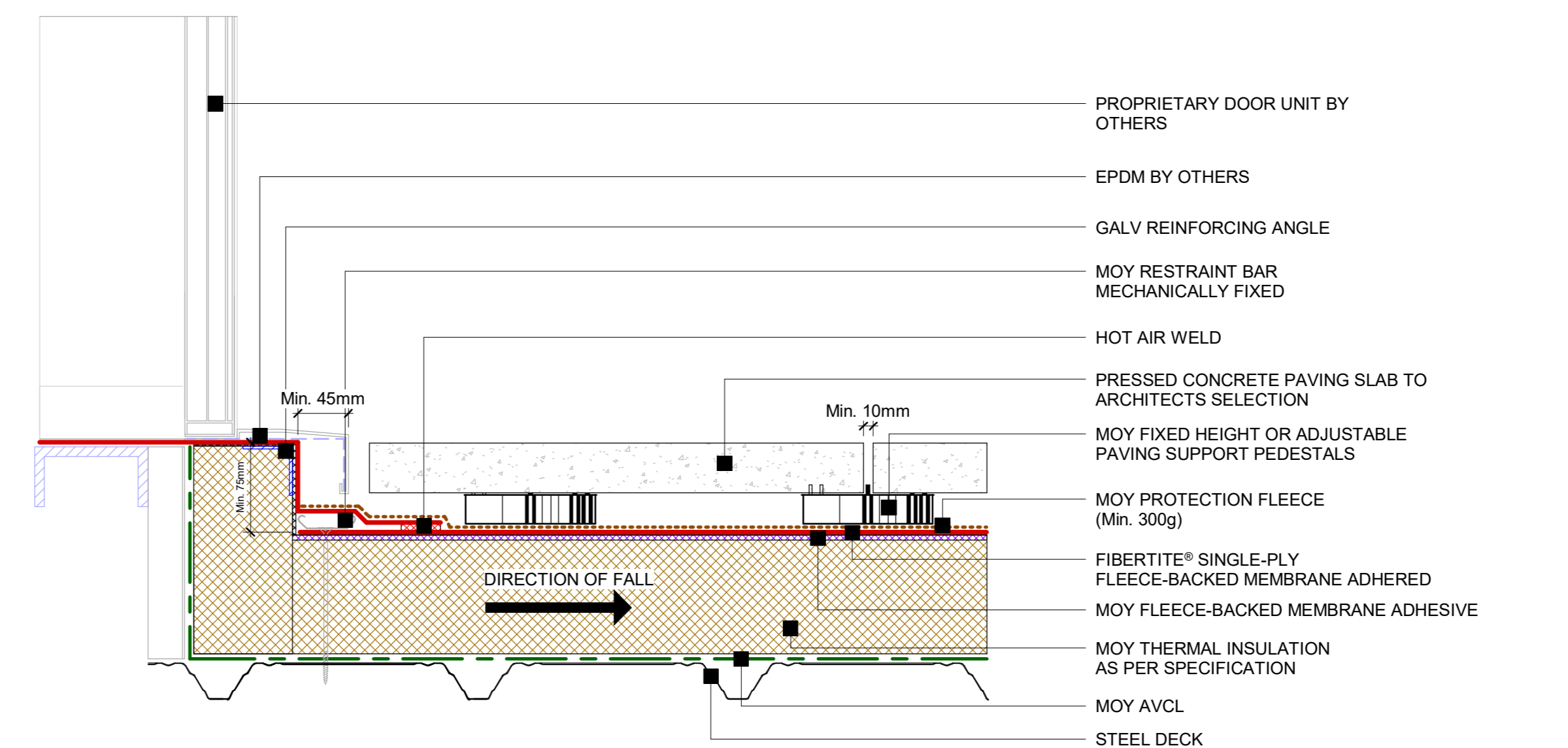
10 **FiberTite® - Termination bar detail**  
1 : 5



11 **FiberTite® - Upstand to composite panel detail**  
1 : 5



12 **FiberTite® - Cill detail**  
1 : 5



13 **FiberTite® - Level access threshold detail (BS 6229)**  
1 : 5

Care is taken to ensure that the contents of this drawing are accurate, however Moy Materials Ltd. and its associated companies accept no responsibility for errors or for information found to be misleading. The customer, designer and specifier must satisfy themselves as to the suitability of all products illustrated on this drawing.



Detail: FiberTite® - Upstand details	
System Ref: FIBERTITE®	DWG. NO: FT-SD-PIR-AD-02
Scale: 1 : 5	Date: 05/11/2024
DUBLIN - LONDON - GLASGOW - FRANKFURT WWW.MOYMATERIALS.COM INFO@MOYMATERIALS.COM	

\*OVERFLOW/ WARNING PIPE OUTLET TO BE SET Min 25mm\*  
BELOW UNDERSIDE OF DOOR CILL AS PER BS 6229  
PLEASE CONSULT PROJECT STRUCTURAL ENGINEER REGARDING WEIGHT LOADING ON DECK